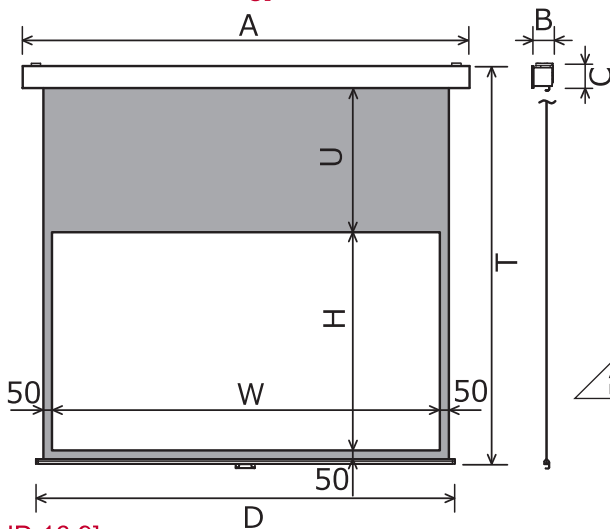


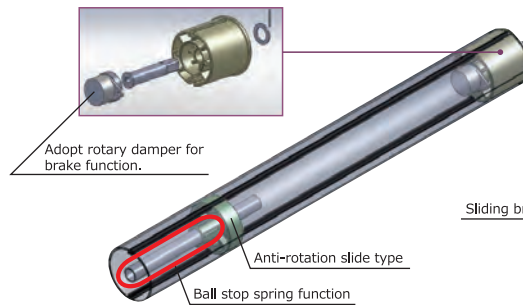
## Simple structure and design Manual screen which is proud of the silence whenwinding

- Maximizing the simplicity and perfect design for exposed installation.
- Super flat design enables to store without the sense of visibility.
- Symmetric structure and easy to know the center position.
- The front panel is detachable and exchangeable even after installation.

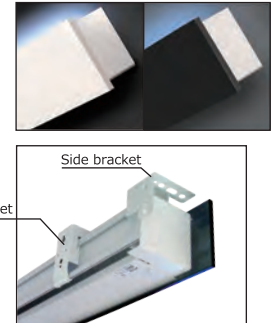
### [Dimensional drawing]



Achieve high silence by adopting the new spring winding mechanism and rotary damper proprietary developed by OS.



Two colors of panel- Black or white.



### [HD 16:9]

Size(inch)	Model	Image size W×H (mm)	Length A (mm)	Height T (mm)	UBB U (mm)	Side mask (mm)	Depth B (mm)	Height when in stored C(mm)	Pipe length D (mm)	Weight (Kg)
80	SMP-080HM-W1A	1771×996	2118	2248 2242	1004	50	134 135	160 154	1937	15.9
90	SMP-090HM-W1A	1992×1121	2339		879				2158	17.0
100	SMP-100HM-W1A	2214×1245	2561	755	2380	18.1				
110	SMP-110HM-W1A	2435×1370	2782	630	2601	19.2				
120	SMP-120HM-W1A	2657×1494	3004	506	2823	20.3				
130	SMP-130HM-W1A	2878×1619	3225	381	3044	21.4				
140	SMP-140HM-W1A	3099×1743	3446	257	3265	22.4				
150	SMP-150HM-W1A	3321×1868	3668	132	3487	23.4				

※The numbers of (T),(B) and (C) above indicate when sliding bracket is used and the numbers below indicate when side bracket is used.

### [Fabric lineup]

Size(inch)	model	HF102	WF801	WF302	WF204	WG103	WS102 WS103	BU201
80	SMP-080HM-W1A	-	●	-	●	●	-	●
90	SMP-090HM-W1A	-	●	-	●	●	-	●
100	SMP-100HM-W1A	-	●	-	●	●	-	●
110	SMP-110HM-W1A	-	●	-	●	●	-	●
120	SMP-120HM-W1A	-	●	-	●	●	-	●
130	SMP-130HM-W1A	-	●	-	●	●	-	●
140	SMP-140HM-W1A	-	●	-	●	●	-	●
150	SMP-150HM-W1A	-	-	-	-	●	-	●

Manufactured by

# OSM CO.,LTD.

278-3,kakehashi,Yamasaki-Cho,Shisou-Shi  
Hyogo,671-2523 Japan  
Tel.+81-790-64-5888 Fax.+81-790-62-9195

<https://www.os-worldwide.com/osm/>