



# Sound screen WS102/WS103



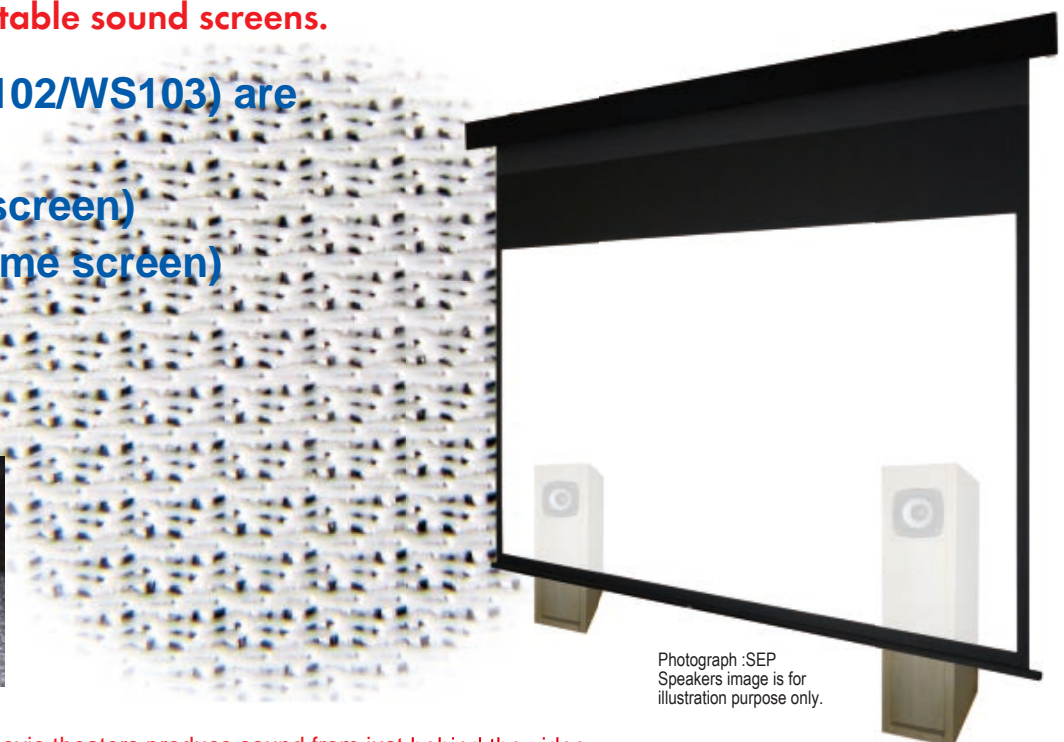
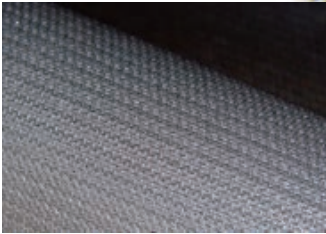
Our faithful video reproducibility has been certified as the world's top-quality standard, THX. "Super AV Knitting" eliminates moire, and "Stainless Sputtering" suppressing video reflection from behind, these are our proprietary technology and supports the world of comfortable sound screens.

Sound Mat (WS102/WS103) are suitable for

- SEP(Electric screen)
- SPX(Fixed frame screen)

Microphotograph  
x80

Stainless sputtering prevents reflected light from the back



Photograph :SEP  
Speakers image is for illustration purpose only.

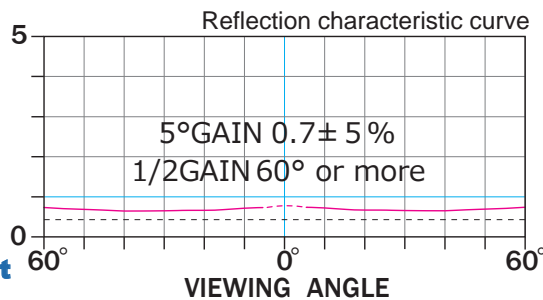
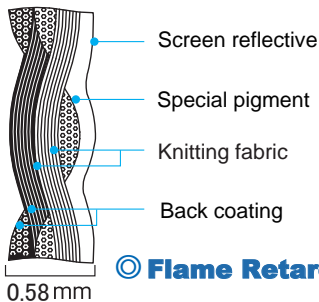
Sound screens are used in movie theaters produce sound from just behind the video, This screen is optimal for those who focus on sound localization.

- Eco-screen using recycled pet fibers.
- Excellent acoustic properties of THX authentication.
- "Stainless steel sputtering" is used for the back coating, which prevents reflected light from the back.
- A diffusion-based white topcoat faithfully reproduces the video.

■ 5°gain 0.7 ± 5%

■ Half gain 60° or more

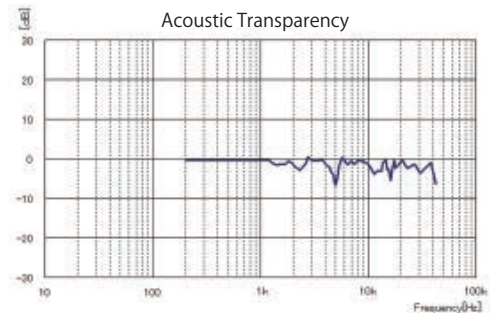
Cross section



## SOUNDMAT

Diffusive reflection characteristics and Acoustic characteristics

A sound screen with a fine knitted fabric weave. It made compatible that uniform optical property diffusive screens and THX-authentication high-pitched acoustic



### WS103

The WS103 has a thickness of 0.7mm, and the fabric characteristics are the same as those of WS102. This is a large-sized Sound Mat for 130" and bigger sized models



Global standards for theater proposed by Lucas Film WS102 is certified as Home-THX after qualification tests for sound transmission characteristics and image quality.

Sold by

# OSI CO., LTD.



20th Floor, Wah Hing Commercial Building, 283 Lockhart Road, Wanchai, Hong Kong  
Tel.+852-3580-0087 Fax.+852-2367-4300

<https://hk.os-worldwide.com/> [info-hk@os-worldwide.com](mailto:info-hk@os-worldwide.com)

FEEL THE THX