

## Electric projection screen



# SEP

【Material lineup】

WG207

WS102

WS103

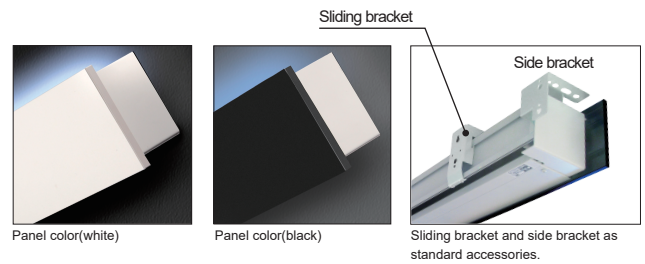
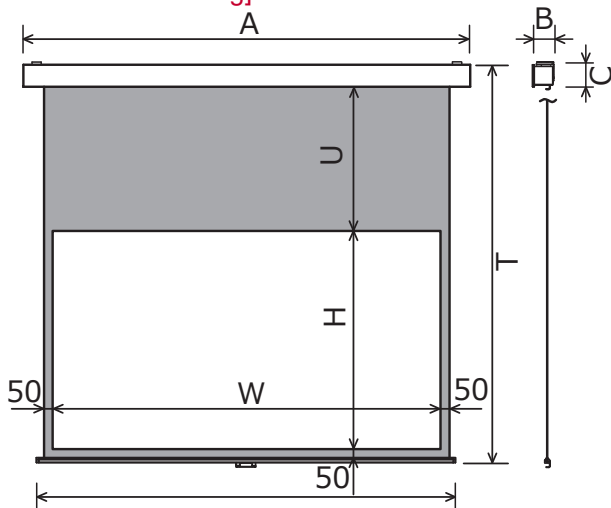
SOUNDMAT

◎ Flame retardant

The electric projection screen with simple design is not required any installation environment at various business scene.  
Compatible to 200 inches large screen.

- The simple panel design matches your interiors!
- Easy to know the center position as the case and fabric are symmetric design.
- Sliding bracket and side bracket are standard accessories.
- The front panel is detachable and exchangeable even after installation.
- Two choices of panel color black or white.

### [Dimensional drawing]



### [HD16:9]

Please specify the model code for "x1x" by following the model building on page 26.

Diagonal size(inch)	Model	Image size W×H(mm)	Length A(mm)	Height T(mm)	UBB U(mm)	Side mask (mm)	Depth B(mm)	Height when in stored C(mm)
80	SEP-080HM-x1x	1771×996	2118	2223	1004	50	134	145
90	SEP-090HM-x1x	1992×1121	2339		879	50		
100	SEP-100HM-x1x	2214×1245	2561		755	50		
110	SEP-110HM-x1x	2435×1370	2782		630	50		
120	SEP-120HM-x1x	2657×1494	3004		506	50		
130	SEP-130HM-x1x	2878×1619	3225	2217	381	50	135	139
140	SEP-140HM-x1x	3099×1743	3446		257	50		
150	SEP-150HM-x1x	3321×1868	3668		132	50		

※The numbers of (T),(B) and (C) above indicate when sliding bracket is used and the numbers below indicate when sliding bracket is used. (T),(B) and (C) of WF302 indicate when side bracket is used.

### [Material lineup]

Diagonal size(inch)	Model	Applicable screen materials
80	SEP-080HM-x1x	WS102
90	SEP-090HM-x1x	WS102
100	SEP-100HM-x1x	WS102
110	SEP-110HM-x1x	WS102
120	SEP-120HM-x1x	WS102
130	SEP-130HM-x1x	WS103
140	SEP-140HM-x1x	WS103
150	SEP-150HM-x1x	WG207 WS103
170	SEP-170HM-x1x	WG207
200	SEP-200HM-x1x	WG207

(NTSC (4:3), WXGA (16:10), Cinema Scope(2.35:1)are available on your request.)